

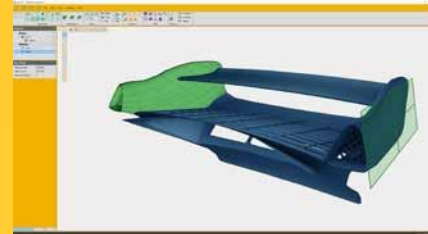
# The complete 3D scanning solution for your reverse engineering and design projects



**Point and shoot**  
to scan your part



**Clean**  
your mesh



**Extract**  
geometric entities



**Export**  
to any CAD software

## Tuners. Designers. Manufacturers. **Here's your new helper.**

No more measurements, no more starting your design from scratch, no more trial-and-error, no more sending your parts abroad to get molds.

Improve overall design efficiency and reduce your time-to-market with the peel 2 CAD turnkey solution.



Big or small, there is **apeel** for your application!



learn more [peel-3d.com](https://www.peel-3d.com)

# TECHNICAL SPECIFICATIONS



	peel 2 CAD-S	peel 2 CAD
Part size range (recommended)	0.05 - 0.5 m	0.3 – 3.0 m
Accuracy	Up to 0.100 mm	
Mesh resolution	0.100 mm	0.250 mm
Measurement rate	550,000 measurements/s	
Volumetric accuracy (based on part size)	0.300 mm/m <sup>1</sup>	
Scanning area	143 x 108 mm	380 x 380 mm
Stand-off distance	380 mm	400 mm
Depth of field	100 mm	250 mm
Light source	White light (LED)	
Texture resolution	50 to 250 DPI	50 to 150 DPI
Positioning methods	Geometry and/or targets and/or texture	
Dimensions	154 x 178 x 235 mm	150 x 171 x 251 mm
Connection standard	1 x USB 2.0	
Output formats	.dae, .fbx, .ma, .obj, .ply, .stl, .txt, .wrl, .x3d, .x3dz, .zpr, .iges, .step, .dxf	
Operating temperature range	5–40°C	
Operating humidity range (non-condensing)	10–90%	
Certifications	EC Compliance (Electromagnetic Compatibility Directive, Low Voltage Directive), IP50, WEEE	

(1) With positioning targets or with an object presenting adequate geometry for positioning.

## peel 2 CAD list of tools and functions



## Tools to get the work done



Clean up



Fill



Mirror



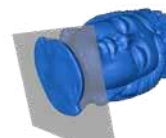
Align



Smooth



Decimate



Trim



Merge



Join the Fun!

authorized distributor



Filament Co.  
FILAMENT SPECIALISTS